

LM-79-08 Test Report

For

L-TECH CORPORTION

(Brand Name: L-TECH CORP)

SHAOGANGTOU DISTRICT.QIAOTOU TOWN.DONGGUAN
CITY.GUANGDONG PROVINCE,CHINA

LED Luminare

Model name(s): LSKT-624W-2790
LSKT-654W-2790

Representative (Tested) Model: LSKT-624W-2790

Model Different: All construction and rating are the same, except the
installation of driver.

Test & Report By:

Univ Xie

Engineer: Univ Xie

Date: Apr.12, 2017

Updated:Dec.22,2017

Note: This report does not imply product certification, approval, or endorsement by NVLAP, NIST, or any agency of the Federal Government.

Review By:

Tommy Liang

Manager: Tommy Liang

Laboratory: Standard-Tech Co. Ltd Testing Center

NVLAP CODE: 201011-0

Report Format Number STD/QR4909-A/2

Address: Standard-Tech Building, No.6 Guanhong Road,Guangzhou Science City, Guangzhou 510663, China

Tel: 8620-3229 0320

Fax: 8620-32290422

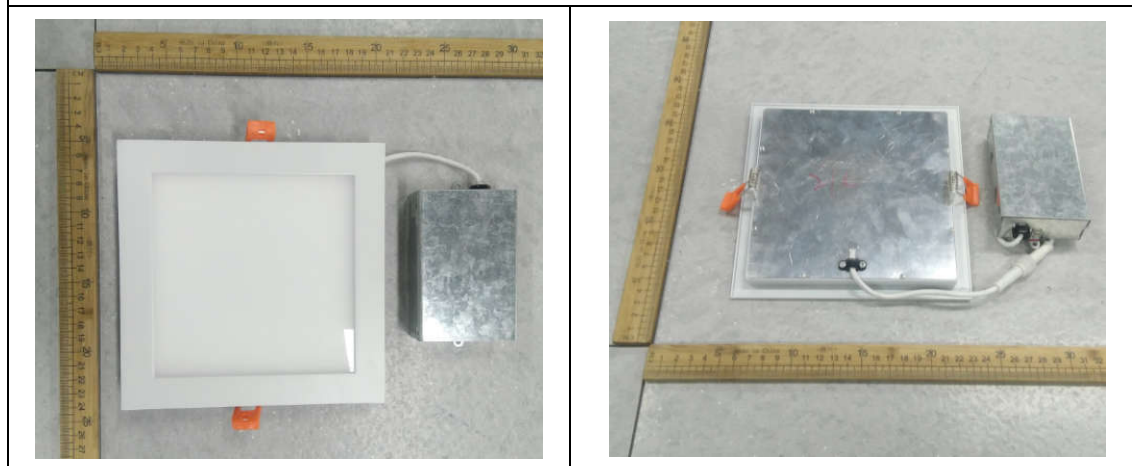
<http://www.standard-tech.com>

1.1 Product Information:

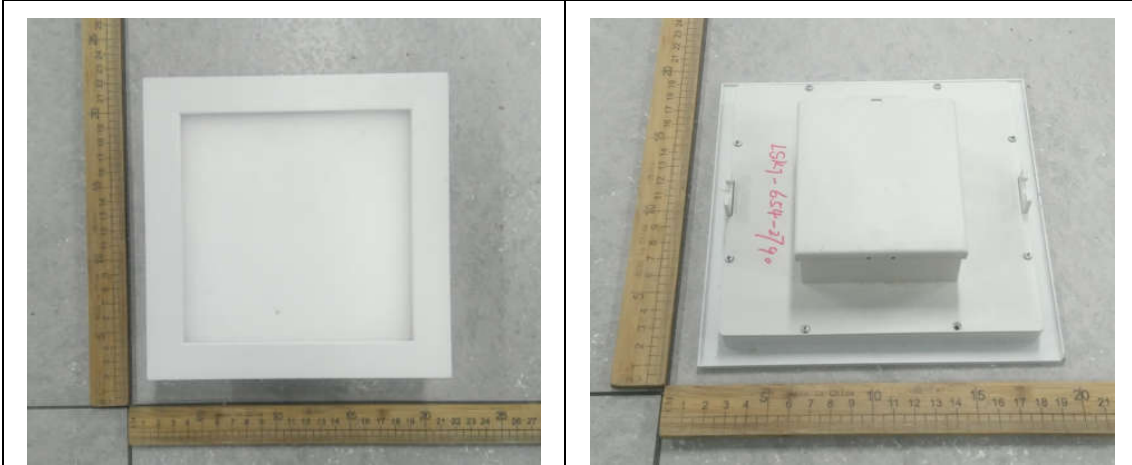
Organization Name	L-TECH CORPORTION	
Brand Name	L-TECH CORP	
Model Number	LSKT-624W-2790 LSKT-654W-2790	
SKU (if available)	N/A	
Type of Luminaire (for integral lamps, list base type and lamp type)	LED Luminaire	
Rated Voltage / Frequency	120Vac, 60 Hz	
Nominal Power	16W	
Rated Initial Lamp Lumen	--	
Declared CCT	2700K	
LED Manufacturer	Edison Opto Corporation	
LED Model	2T01X2	
Sample Number	GZE1612120-BL1	
Luminaire Aperture (for downlights)	--	in.
Luminaire Length	--	mm
Luminaires Width	--	mm
Number of Units (modular products)	N/A	s

Photo

LSKT-624W-2790



LSKT-654W-2790



Laboratory: Standard-Tech Co. Ltd Testing Center
NVLAP CODE: 201011-0

Report Format Number STD/QR4909-A/2

Address: Standard-Tech Building, No.6 Guanhong Road, Guangzhou Science City, Guangzhou 510663, China

Tel: 8620-3229 0320

Fax: 8620-32290422

<http://www.standard-tech.com>

Revision Details

Report No.Revision	Updated Item: model name	Revised Reason	Issue date
GZE1612120-BL	Additional model name:	Add additional model	Apr.12, 2017
GZE1612120-BL-R	LSKT-654W-2790		Dec.22,2017

Laboratory: Standard-Tech Co. Ltd Testing Center**NVLAP CODE: 201011-0**

Report Format Number STD/QR4909-A/2

Address: Standard-Tech Building, No.6 Guanhong Road,Guangzhou Science City, Guangzhou 510663, China

Tel: 8620-3229 0320

Fax: 8620-32290422

<http://www.standard-tech.com>

1.2 Test Specifications:

Date of Receipt	Mar.31, 2017
Date of Test	Apr.01, 2017
Test item	<ol style="list-style-type: none"> 1. Total Luminous Flux 2. Luminous Distribution Intensity 3. Luminous Efficacy 4. Correlated Color Temperature 5. Color Rendering Index 6. Chromaticity Coordinate 7. Electrical Parameters
Reference Standard	<ol style="list-style-type: none"> 1. IES LM-79-2008 Electrical and Photometric Measurements of Solid-State Lighting Products 2. ANSI C78.377-2008 Specifications for the Chromaticity of Solid State Lighting Products 3. CIE 13.3-1995 Method of Measuring and Specifying Colour Rendering Properties of Light Sources 4. CIE 15-2004 Technical Report Colorimetry 5. IESNA LM-16-93 Practical Guide to Colorimetry of Light Source 6. IESNA TM-16-05 Technical Memorandum on Light Emitting Diode (LED) Sources and Systems
Reference Work Instruction	QD25

1.3 Test Methods

<p>1) Photometric and Light Distribution Measurement – Goniophotometer Method: Photometric parameters were measured using the goniophotometer and software. The ambient temperature shall be maintained at 25° C ± 1° C, measured at a point not more than 1 m from the sample and at the same height as the sample. The sample was operated at 120 or rated Volts AC, 60Hz. It was stabilized before measurement was made. Luminous flux, luminaire efficacy, zonal lumen were calculated from the software taken at 1° vertical intervals and 22.5° horizontal intervals.</p>
<p>2) Chromaticity Measurement – Sphere-Spectroradiometer Method: Chromaticity parameters were measured using an integrating sphere, a spectroradiometer and software. The ambient temperature condition inside the sphere was maintained at 25° C ± 1° C. The sample measurements were made using a spectroradiometer connected by a fiber optic cable and detector through the detector port of the integrating sphere. The sample was operated at 120 or rated Volts AC, 60Hz. It was stabilized before measurement was made. Chromaticity coordinates, correlated color temperature and color rendering index were calculated from the spectral power distribution taken at 5 nm intervals over the range of 380 to 780 nm.</p>
<p>3) Electrical Measurements: Electrical parameters were measured using power meters incorporated in goniophotometer or sphere-spectroradiometer system. The ambient temperature surrounding the sample was maintained at 25° C ± 1° C. The sample was operated at 120 or rated Volts AC, 60Hz. It was stabilized before measurement was made. Voltage, frequency, current, power, power factor and total harmonic distortion were measured by and read from the power meter.</p>

2.1 Electrical, Photometric and Chromaticity Measurements

(Refer to Work Instruction QD25)

Test date	2017-04-01	Test Ambient:	25.2 ° C
Test Orientation	As intended	Stabilization Time (min)	90
Model Number	LSKT-624W-2790		

Electrical Measurement:

Sample No.	Voltage (Vac)	Frequency (Hz)	Current (A)	Power (W)	Power Factor
GZE161212 0-BL1	120.0	60	0.1390	15.28	0.9141

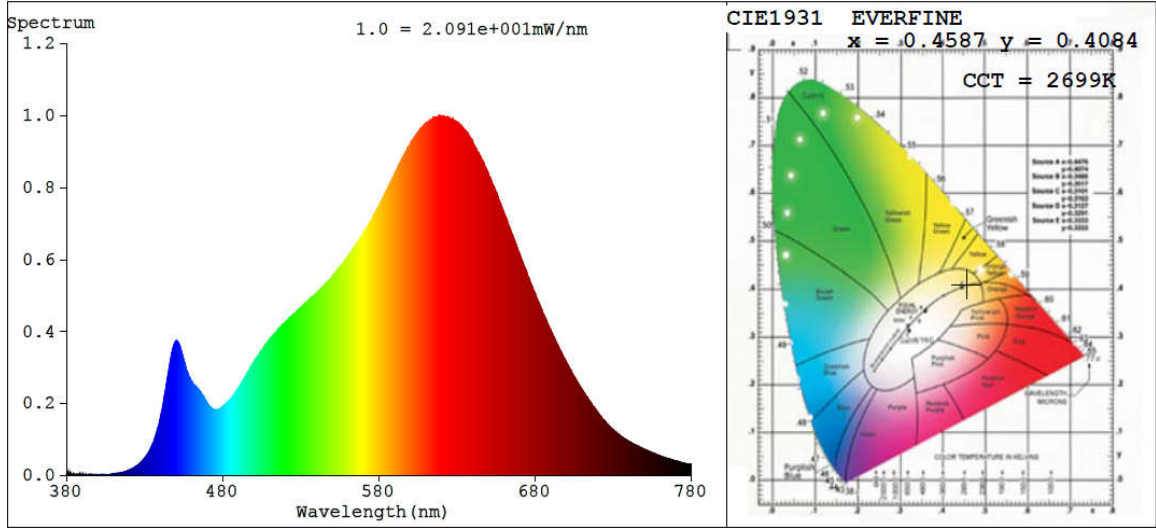
Chromaticity Measurement - Sphere-Spectroradiometer Method:

Parameter	Result	Special Color Rendering Indices			
Test Voltage (V)	120.0	R1	92	R9	53
Frequency (Hz)	60	R2	97	R10	93
CCT (K)	2699	R3	98	R11	94
Duv	-0.0007	R4	92	R12	87
Chromaticity (x, y)	x=0.4587 y=0.4084	R5	93	R13	94
Chromaticity (u', v')	u'=0.2628 v'=0.5263	R6	97	R14	100
Color Rendering Index (CRI)	92.2	R7	90	R15	87
R9	53	R8	78	--	--

Photometric Measurement – Goniophotometer Method:

Parameter	Result
Test Voltage (V)	120.0
Frequency (Hz)	60
Total Luminous (lm)	968.92
Luminous Efficacy (lm/W)	63.41
Beam Angle (°)	109.2
Center Beam Candle Power (cd)	356

Spectral Power Distribution & Chromaticity Diagram

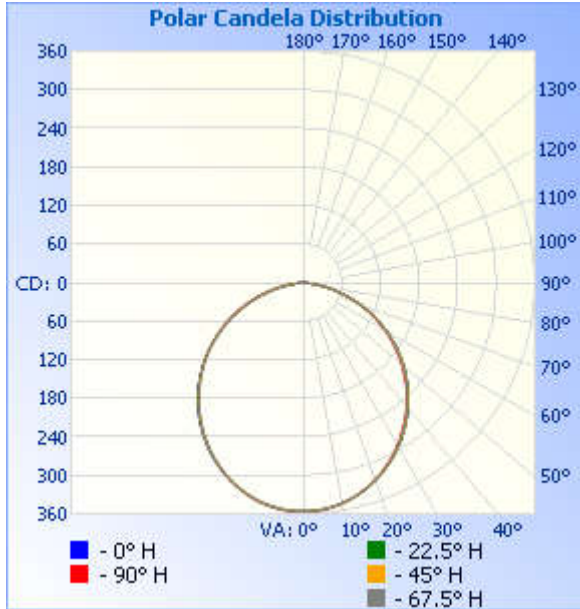


Zonal Lumen Tabulation

Zonal Lumen Summary		
Zone	Lumens	% Luminaire
0-30	273.0	28.2%
0-40	444.3	45.9%
0-60	777.2	80.2%
60-90	190.5	19.7%
70-100	73.9	7.6%
90-120	0.5	0%
0-90	967.7	99.9%
90-180	1.1	0.1%
0-180	968.8	100%

Lumens Per Zone					
Zone	Lumens	% Total	Zone	Lumens	% Total
0-10	33.6	3.5%	90-100	0.2	0%
10-20	95.7	9.9%	100-110	0.1	0%
20-30	143.7	14.8%	110-120	0.1	0%
30-40	171.3	17.7%	120-130	0.1	0%
40-50	175.8	18.2%	130-140	0.1	0%
50-60	157.0	16.2%	140-150	0.1	0%
60-70	116.8	12.1%	150-160	0.1	0%
70-80	61.8	6.4%	160-170	0.1	0%
80-90	11.9	1.2%	170-180	0.0	0%

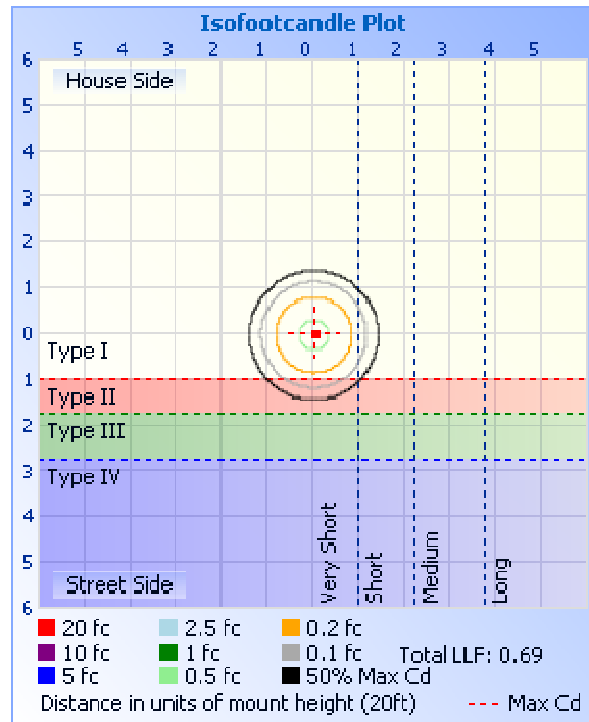
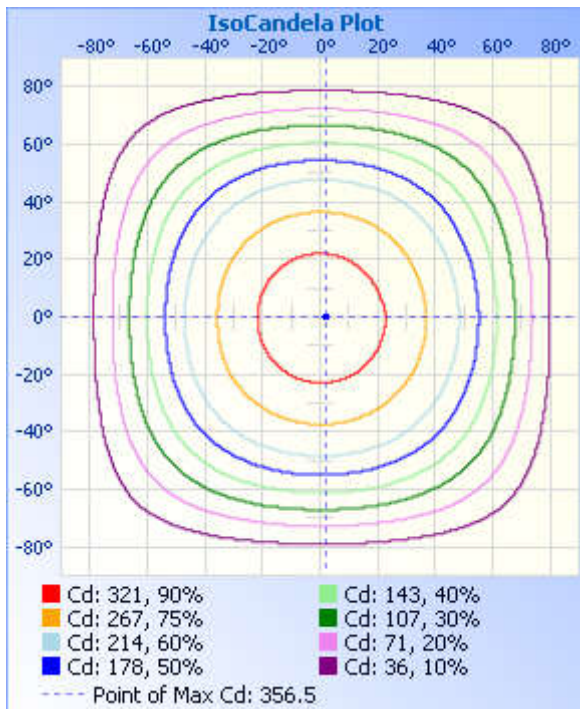
Photometric Data



Illuminance at a Distance

Center Beam fc	Beam Width	
1.23 fc	48.0 ft	47.6 ft
0.31 fc	96.0 ft	95.2 ft
0.14 fc	144.0 ft	142.8 ft
0.08 fc	192.0 ft	190.4 ft
0.05 fc	240.0 ft	238.0 ft
0.03 fc	288.0 ft	285.6 ft

■ Vert. Spread: 109.4°
■ Horiz. Spread: 108.9°



Laboratory: Standard-Tech Co. Ltd Testing Center
 NVLAP CODE: 201011-0

Report Format Number STD/QR4909-A/2

Address: Standard-Tech Building, No.6 Guanhong Road, Guangzhou Science City, Guangzhou 510663, China

Tel: 8620-3229 0320 Fax: 8620-32290422 <http://www.standard-tech.com>

Candela Table - Type C

	0	22.5	45	67.5	90	112.5	135	157.5	180	202.5	225	247.5	270	292.5	315	337.5	360
0	356	356	356	356	356	356	356	356	356	356	356	356	356	356	356	356	356
1	355	356	356	356	356	355	355	355	356	356	356	356	356	355	355	355	355
2	355	356	356	356	356	355	355	355	356	356	356	356	356	355	355	355	355
3	355	355	355	356	356	355	355	355	355	355	355	356	356	354	354	355	355
4	355	355	355	355	355	354	354	354	355	355	355	355	356	354	354	354	355
5	354	354	354	354	355	354	354	354	354	354	354	355	355	353	353	353	354
6	353	353	353	354	354	353	353	353	353	353	353	354	354	352	352	353	353
7	352	352	352	353	352	352	352	352	352	352	352	353	353	351	351	352	352
8	351	351	351	351	351	351	351	351	351	352	351	352	352	350	350	351	351
9	350	350	350	350	350	350	350	350	350	350	350	351	351	349	349	349	350
10	348	349	349	349	349	348	348	348	349	349	349	349	350	347	347	348	348
11	347	347	347	347	347	347	347	347	347	348	347	347	348	346	346	346	347
12	345	345	345	345	345	345	345	345	345	346	346	346	347	344	344	345	345
13	343	344	344	344	343	344	343	344	344	344	344	344	345	342	342	343	343
14	342	342	341	342	341	341	341	342	342	342	341	342	343	340	340	341	342
15	339	340	340	339	339	339	339	340	340	340	340	340	341	338	338	339	339
16	337	338	337	337	337	337	337	337	338	338	337	337	338	336	336	337	337
17	335	335	335	335	334	335	335	335	335	335	335	335	336	334	334	334	335
18	333	333	333	333	332	332	332	333	333	333	333	333	334	331	331	332	333
19	330	330	330	330	329	330	330	331	331	331	330	330	331	328	329	329	330
20	327	327	327	327	326	327	327	328	328	328	327	327	328	325	326	327	327
21	324	325	324	324	323	324	324	325	325	325	324	324	325	322	323	324	324
22	322	322	322	321	321	321	321	322	322	322	322	322	323	320	320	321	322
23	319	319	318	318	317	318	318	319	320	319	318	318	319	316	317	318	319
24	315	316	315	315	314	315	315	316	316	316	315	315	316	313	314	315	315
25	313	312	312	311	311	311	312	313	313	313	312	312	313	310	310	311	313
26	309	309	308	308	307	308	309	309	310	309	309	308	309	306	307	308	309
27	306	306	305	304	304	304	305	306	306	306	305	305	306	303	304	305	306
28	302	303	302	301	300	301	302	302	303	302	302	301	302	299	301	302	302

Laboratory: Standard-Tech Co. Ltd Testing Center

NVLAP CODE: 201011-0

Report Format Number STD/QR4909-A/2

Address: Standard-Tech Building, No.6 Guanhong Road, Guangzhou Science City, Guangzhou 510663, China

Tel: 8620-3229 0320

Fax: 8620-32290422

<http://www.standard-tech.com>

29	299	299	298	297	296	297	298	299	299	299	297	298	299	296	296	298	299
30	295	295	294	294	292	294	294	295	296	295	294	294	295	292	292	294	295
31	291	291	290	289	289	290	291	292	292	291	290	290	291	288	289	290	291
32	287	288	287	286	284	286	286	287	287	287	286	286	287	284	285	287	287
33	283	283	282	282	280	282	283	283	284	284	282	282	283	280	281	283	283
34	279	279	278	277	276	277	278	279	279	279	278	278	279	276	277	279	279
35	275	275	274	273	272	274	275	275	276	275	274	273	274	271	273	274	275
36	271	270	270	269	268	269	270	271	271	271	269	269	271	268	268	270	271
37	266	267	265	265	263	265	265	266	267	266	265	265	266	263	264	266	266
38	263	262	262	260	259	260	261	262	263	262	260	261	261	259	260	261	263
39	258	258	257	256	254	255	256	258	258	257	257	256	257	254	256	257	258
40	254	253	252	251	250	252	252	253	254	253	252	251	252	249	251	252	254
41	249	249	248	247	245	246	247	249	249	248	246	247	248	245	246	248	249
42	244	244	242	242	240	242	242	244	244	243	242	242	243	240	242	243	244
43	239	239	238	237	236	237	238	239	239	239	237	238	238	236	237	239	239
44	234	234	233	232	230	232	233	234	234	234	233	232	234	231	232	234	234
45	230	229	229	227	226	228	229	229	230	229	228	227	229	226	227	228	230
46	225	225	223	223	220	222	223	224	224	224	222	223	224	221	223	224	225
47	219	219	218	217	216	218	218	219	219	219	218	217	219	216	217	219	219
48	215	215	214	212	210	212	213	213	214	213	213	212	213	211	212	214	215
49	209	209	208	207	205	207	208	209	209	209	208	207	209	206	208	209	209
50	205	204	203	202	200	202	202	203	204	203	203	202	203	201	202	203	205
51	199	199	198	196	195	197	198	199	198	199	197	197	199	195	197	199	199
52	194	193	193	191	190	191	192	193	193	193	192	192	193	191	192	193	194
53	188	189	187	186	184	186	187	187	188	187	186	186	187	185	186	188	188
54	182	183	181	181	178	181	181	182	182	182	181	181	183	179	181	182	182
55	178	178	177	175	174	176	176	176	176	176	176	175	177	175	175	177	178
56	171	172	171	170	168	170	171	170	170	170	170	170	171	169	171	171	171
57	166	166	166	164	163	164	165	165	164	165	164	164	166	164	165	165	166
58	160	161	160	158	157	159	159	159	159	159	159	158	160	158	160	160	160
59	155	154	154	153	152	153	154	153	153	153	153	154	154	152	154	154	155
60	149	149	149	147	145	147	147	147	146	147	148	147	149	147	147	149	149

Laboratory: Standard-Tech Co. Ltd Testing Center
NVLAP CODE: 201011-0

Report Format Number STD/QR4909-A/2

Address: Standard-Tech Building, No.6 Guanhong Road, Guangzhou Science City, Guangzhou 510663, China

Tel: 8620-3229 0320 Fax: 8620-32290422 <http://www.standard-tech.com>

61	142	143	142	142	139	142	142	141	141	141	141	141	143	141	142	143	142
62	137	137	137	136	134	136	136	135	135	135	135	136	138	136	136	137	137
63	131	131	131	131	128	130	130	129	128	129	130	130	132	130	131	131	131
64	125	125	126	124	123	124	124	122	123	124	123	125	126	125	125	124	125
65	119	119	119	118	116	118	118	117	116	117	117	119	121	118	118	119	119
66	113	113	113	113	110	113	111	111	111	110	112	112	114	112	113	112	113
67	107	107	108	107	105	106	106	105	105	105	105	107	109	107	106	107	107
68	100	101	101	101	98	100	99	99	98	99	100	101	103	101	101	101	100
69	95	94	95	95	93	95	94	92	93	92	93	96	97	95	94	94	95
70	88	89	89	90	87	88	87	87	86	87	86	89	91	89	89	89	88
71	83	82	84	83	82	83	81	80	79	80	81	83	85	84	83	82	83
72	76	77	77	77	75	77	75	73	74	75	75	78	79	78	76	77	76
73	70	70	70	72	69	70	69	68	67	68	69	71	74	71	71	70	70
74	65	64	65	65	64	65	62	62	62	62	63	65	67	66	64	65	65
75	58	59	59	60	58	59	57	57	56	57	56	60	62	60	59	59	58
76	53	52	54	54	53	52	51	50	50	50	51	53	56	55	53	52	53
77	47	47	47	48	46	47	46	44	45	44	45	47	50	48	48	47	47
78	42	41	41	43	42	41	40	39	38	39	39	42	45	42	42	41	42
79	36	37	37	37	36	36	34	33	34	33	35	36	39	37	36	37	36
80	31	31	31	32	30	31	29	29	28	29	29	31	33	31	31	31	31
81	26	26	26	26	26	25	24	23	23	24	25	26	29	27	26	26	26
82	21	21	21	21	20	21	20	18	19	19	19	21	24	22	22	21	21
83	17	17	17	17	17	16	15	15	14	15	15	17	20	17	17	16	17
84	13	13	13	13	12	12	11	11	10	11	11	12	15	13	12	13	13
85	9	9	9	9	8	8	8	7	7	8	8	9	11	9	9	9	9
86	6	6	6	6	6	5	5	5	5	5	5	6	8	6	6	6	6
87	3	4	3	4	3	3	3	3	3	3	3	3	5	4	4	4	3
88	2	2	2	2	2	1	1	1	1	1	1	2	3	2	1	1	2
89	0	0	1	0	0	0	0	0	0	0	0	0	1	0	0	0	0
90	0	0	0	0	0	0	0	0	0	0	0	0	0	0	0	0	0
91	0	0	0	0	0	0	0	0	0	0	0	0	0	0	0	0	0
92	0	0	0	0	0	0	0	0	0	0	0	0	0	0	0	0	0

Laboratory: Standard-Tech Co. Ltd Testing Center
NVLAP CODE: 201011-0

Report Format Number STD/QR4909-A/2

Address: Standard-Tech Building, No.6 Guanhong Road, Guangzhou Science City, Guangzhou 510663, China

Tel: 8620-3229 0320 Fax: 8620-32290422 <http://www.standard-tech.com>

93	0	0	0	0	0	0	0	0	0	0	0	0	0	0	0	0
94	0	0	0	0	0	0	0	0	0	0	0	0	0	0	0	0
95	0	0	0	0	0	0	0	0	0	0	0	0	0	0	0	0
96	0	0	0	0	0	0	0	0	0	0	0	0	0	0	0	0
97	0	0	0	0	0	0	0	0	0	0	0	0	0	0	0	0
98	0	0	0	0	0	0	0	0	0	0	0	0	0	0	0	0
99	0	0	0	0	0	0	0	0	0	0	0	0	0	0	0	0
100	0	0	0	0	0	0	0	0	0	0	0	0	0	0	0	0
101	0	0	0	0	0	0	0	0	0	0	0	0	0	0	0	0
102	0	0	0	0	0	0	0	0	0	0	0	0	0	0	0	0
103	0	0	0	0	0	0	0	0	0	0	0	0	0	0	0	0
104	0	0	0	0	0	0	0	0	0	0	0	0	0	0	0	0
105	0	0	0	0	0	0	0	0	0	0	0	0	0	0	0	0
106	0	0	0	0	0	0	0	0	0	0	0	0	0	0	0	0
107	0	0	0	0	0	0	0	0	0	0	0	0	0	0	0	0
108	0	0	0	0	0	0	0	0	0	0	0	0	0	0	0	0
109	0	0	0	0	0	0	0	0	0	0	0	0	0	0	0	0
110	0	0	0	0	0	0	0	0	0	0	0	0	0	0	0	0
111	0	0	0	0	0	0	0	0	0	0	0	0	0	0	0	0
112	0	0	0	0	0	0	0	0	0	0	0	0	0	0	0	0
113	0	0	0	0	0	0	0	0	0	0	0	0	0	0	0	0
114	0	0	0	0	0	0	0	0	0	0	0	0	0	0	0	0
115	0	0	0	0	0	0	0	0	0	0	0	0	0	0	0	0
116	0	0	0	0	0	0	0	0	0	0	0	0	0	0	0	0
117	0	0	0	0	0	0	0	0	0	0	0	0	0	0	0	0
118	0	0	0	0	0	0	0	0	0	0	0	0	0	0	0	0
119	0	0	0	0	0	0	0	0	0	0	0	0	0	0	0	0
120	0	0	0	0	0	0	0	0	0	0	0	0	0	0	0	0
121	0	0	0	0	0	0	0	0	0	0	0	0	0	0	0	0
122	0	0	0	0	0	0	0	0	0	0	0	0	0	0	0	0
123	0	0	0	0	0	0	0	0	0	0	0	0	0	0	0	0
124	0	0	0	0	0	0	0	0	0	0	0	0	0	0	0	0

**Laboratory: Standard-Tech Co. Ltd Testing Center
NVLAP CODE: 201011-0**

Report Format Number STD/QR4909-A/2

Address: Standard-Tech Building, No.6 Guanhong Road,Guangzhou Science City, Guangzhou 510663, China

Tel: 8620-3229 0320 Fax: 8620-32290422 <http://www.standard-tech.com>

125	0	0	0	0	0	0	0	0	0	0	0	0	0	0	0	0
126	0	0	0	0	0	0	0	0	0	0	0	0	0	0	0	0
127	0	0	0	0	0	0	0	0	0	0	0	0	0	0	0	0
128	0	0	0	0	0	0	0	0	0	0	0	0	0	0	0	0
129	0	0	0	0	0	0	0	0	0	0	0	0	0	0	0	0
130	0	0	0	0	0	0	0	0	0	0	0	0	0	0	0	0
131	0	0	0	0	0	0	0	0	0	0	0	0	0	0	0	0
132	0	0	0	0	0	0	0	0	0	0	0	0	0	0	0	0
133	0	0	0	0	0	0	0	0	0	0	0	0	0	0	0	0
134	0	0	0	0	0	0	0	0	0	0	0	0	0	0	0	0
135	0	0	0	0	0	0	0	0	0	0	0	0	0	0	0	0
136	0	0	0	0	0	0	0	0	0	0	0	0	0	0	0	0
137	0	0	0	0	0	0	0	0	0	0	0	0	0	0	0	0
138	0	0	0	0	0	0	0	0	0	0	0	0	0	0	0	0
139	0	0	0	0	0	0	0	0	0	0	0	0	0	0	0	0
140	0	0	0	0	0	0	0	0	0	0	0	0	0	0	0	0
141	0	0	0	0	0	0	0	0	0	0	0	0	0	0	0	0
142	0	0	0	0	0	0	0	0	0	0	0	0	0	0	0	0
143	0	0	0	0	0	0	0	0	0	0	0	0	0	0	0	0
144	0	0	0	0	0	0	0	0	0	0	0	0	0	0	0	0
145	0	0	0	0	0	0	0	0	0	0	0	0	0	0	0	0
146	0	0	0	0	0	0	0	0	0	0	0	0	0	0	0	0
147	0	0	0	0	0	0	0	0	0	0	0	0	0	0	0	0
148	0	0	0	0	0	0	0	0	0	0	0	0	0	0	0	0
149	0	0	0	0	0	0	0	0	0	0	0	0	0	0	0	0
150	0	0	0	0	0	0	0	0	0	0	0	0	0	0	0	0
151	0	0	0	0	0	0	0	0	0	0	0	0	0	0	0	0
152	0	0	0	0	0	0	0	0	0	0	0	0	0	0	0	0
153	0	0	0	0	0	0	0	0	0	0	0	0	0	0	0	0
154	0	0	0	0	0	0	0	0	0	0	0	0	0	0	0	0
155	0	0	0	0	0	0	0	0	0	0	0	0	0	0	0	0
156	0	0	0	0	0	0	0	0	0	0	0	0	0	0	0	0

**Laboratory: Standard-Tech Co. Ltd Testing Center
NVLAP CODE: 201011-0**

Report Format Number STD/QR4909-A/2

Address: Standard-Tech Building, No.6 Guanhong Road, Guangzhou Science City, Guangzhou 510663, China

Tel: 8620-3229 0320 Fax: 8620-32290422 <http://www.standard-tech.com>

157	0	0	0	0	0	0	0	0	0	0	0	0	0	0	0	0
158	0	0	0	0	0	0	0	0	0	0	0	0	0	0	0	0
159	0	0	0	0	0	0	0	0	0	0	0	0	0	0	0	0
160	0	0	0	0	0	0	0	0	0	0	0	0	0	0	0	0
161	0	0	0	0	0	0	0	0	0	0	0	0	0	0	0	0
162	0	0	0	0	0	0	0	0	0	0	0	0	0	0	0	0
163	0	0	0	0	0	0	0	0	0	0	0	0	0	0	0	0
164	0	0	0	0	0	0	0	0	0	0	0	0	0	0	0	0
165	0	0	0	0	0	0	0	0	0	0	0	0	0	0	0	0
166	0	0	0	0	0	0	0	0	0	0	0	0	0	0	0	0
167	0	0	0	0	0	0	0	0	0	0	0	0	0	0	0	0
168	0	0	0	0	0	0	0	0	0	0	0	0	0	0	0	0
169	0	0	0	0	0	0	0	0	0	0	0	0	0	0	0	0
170	0	0	0	0	0	0	0	0	0	0	0	0	0	0	0	0
171	0	0	0	0	0	0	0	0	0	0	0	0	0	0	0	0
172	0	0	0	0	0	0	0	0	0	0	0	0	0	0	0	0
173	0	0	0	0	0	0	0	0	0	0	0	0	0	0	0	0
174	0	0	0	0	0	0	0	0	0	0	0	0	0	0	0	0
175	0	0	0	0	0	0	0	0	0	0	0	0	0	0	0	0
176	0	0	0	0	0	0	0	0	0	0	0	0	0	0	0	0
177	0	0	0	0	0	0	0	0	0	0	0	0	0	0	0	0
178	0	0	0	0	0	0	0	0	0	0	0	0	0	0	0	0
179	0	0	0	0	0	0	0	0	0	0	0	0	0	0	0	0
180	0	0	0	0	0	0	0	0	0	0	0	0	0	0	0	0

3. Test Equipment

Equipment ID	Equipment Name	Last Calibration Date	Next Calibration Date
ST-R-336	2 meter Integrating Sphere	2016-07-01	2017-06-30
ST-R-331	Spectral analysis system HAAS-2000	2016-07-01	2017-06-30
D204	Standard Lamp	2016-07-01	2017-06-30
PF2010	Power Meter for Integrating Sphere	2016-07-01	2017-06-30
EE-09	Goniophotometer system	2016-07-01	2017-06-30
D908S	Standard Lamp	2016-07-01	2017-06-30
PF210	Power Meter for Goniophotometer	2016-07-01	2017-06-30

Uncertainty:
Photometric Measurement (Sphere):1.74%
Chromaticity Measurement(Sphere):14.3K
Photometric Measurement(Goniophotometer):1.62%

******* END OF REPORT *******

Laboratory: Standard-Tech Co. Ltd Testing Center

NVLAP CODE: 201011-0

Report Format Number STD/QR4909-A/2

Address: Standard-Tech Building, No.6 Guanhong Road,Guangzhou Science City, Guangzhou 510663, China

Tel: 8620-3229 0320 Fax: 8620-32290422 <http://www.standard-tech.com>