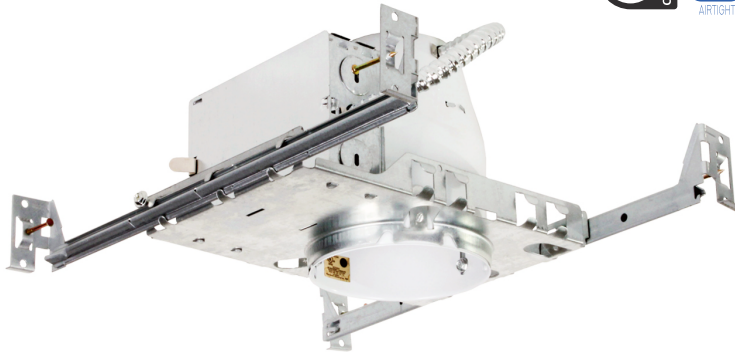
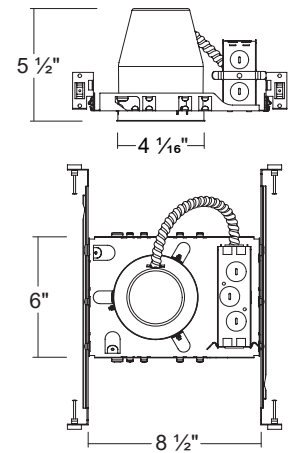


H400GU

4" Non-IC Air-Tight Incandescent New construction Housing (120V MR16, LED)



Dimensions



ORDERING INFORMATION

Model No.	Description
H400GU	4" Non-IC Air-Tight Incandescent New construction Housing (120V MR16, LED)

SPECIFICATION

Plaster Frame

- Galvanized steel construction. The housing can be removed from plaster frame to provide access to the junction box

Junction Box

- Listed for through branch circuit wiring
- Contains seven 7/8" knockouts and four Romex pryouts with strain relief

Bar Hanger

- Pre-installed Real nail easily installs in regular lumber, engineered lumber
- Bar Hangers are adjustable from 13-5/8" to 25" and can be repositioned 90 degree on plaster frame

Thermal Protector

- Self resetting thermal protector deactivates fixture if overheating occurs due to improper lamping or misapplied insulation.

Lamps

- 120V GU10 MR16 Max. 50W, GU10 LED

Listings

- cULus Listed for Damp Location
- cULus Listed for Feed Through