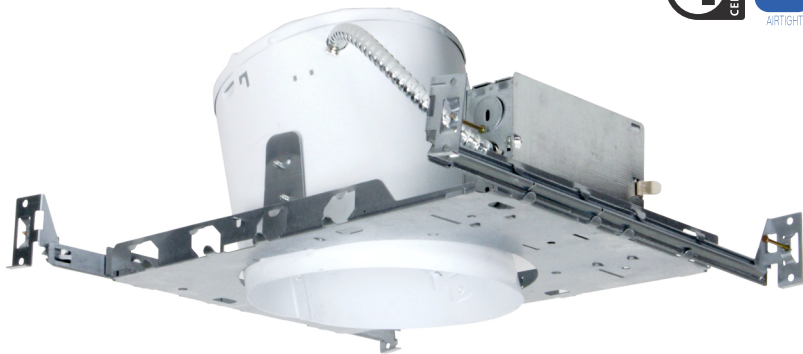
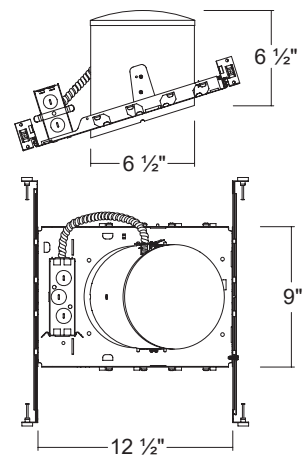


## H900

6" Slope Non-IC Air-Tight Incandescent New construction Housing (Max. 150W)



### Dimensions



## ORDERING INFORMATION

Model No.	Description
H900	6" Slope Non-IC Air-Tight Incandescent New construction Housing (Max. 150W)

## SPECIFICATION

<b>Housing</b> <ul style="list-style-type: none"> <li>Designed for use in ceiling with slopes from 2/12 to 6/12</li> </ul>	<b>Bar Hanger</b> <ul style="list-style-type: none"> <li>Pre-installed Real nail easily installs in regular lumber, engineered lumber</li> <li>Bar Hangers are adjustable from 13-5/8" to 25" and can be repositioned 90 degree on plaster frame</li> </ul>
<b>Plaster Frame</b> <ul style="list-style-type: none"> <li>Galvanized steel construction. The housing can be removed from plaster frame to provide access to the junction box</li> </ul>	<b>Socket</b> <ul style="list-style-type: none"> <li>The socket aiming mechanism allows the lamp to be aimed straight down regardless of ceiling pitch</li> </ul>
<b>Junction Box</b> <ul style="list-style-type: none"> <li>Listed for through branch circuit wiring</li> <li>Contains seven 7/8" knockouts and four Romex pryouts with strain relief</li> </ul>	<b>Listings</b> <ul style="list-style-type: none"> <li>cULus Listed for Damp Location</li> <li>cULus Listed for Feed Through</li> </ul>
<b>Thermal Protector</b> <ul style="list-style-type: none"> <li>Self resetting thermal protector deactivates fixture if overheating occurs due to improper lamping or misapplied insulation.</li> </ul>	

## COMPATIBLE TRIMS

### T900 Smooth



- Incandescent
- 150W BR / Par30

### T903 Stepped Baffle



- Incandescent
- 75W BR / Par30

### T605 Eyeball



- Incandescent
- 75W BR / Par30

### T684 Regressed Eyeball Baffle



- Incandescent
- 75W BR / Par30



**L-TECH CORPORATION**  
www.L-Techcorp.com

CHINA : SHAOGANGTOU DISTRICT, QIAOTOU TOWN, DONGGUAN CITY, GUANGDONG 523536  
TEL : 86-769-83423455 / FAX : 86-769-83423173 E-mail : ltech@vip.163.com  
KOREA : A-1804, WOOLIM BLUE NINE, 240-21, YEOMCHANG-DONG, GANGSEO-GU, SEOUL, 157-779  
TEL : 82-2-2666-2917~8 / FAX : 82-2-2666-7052 E-mail : ltech77@ltechcorp.com