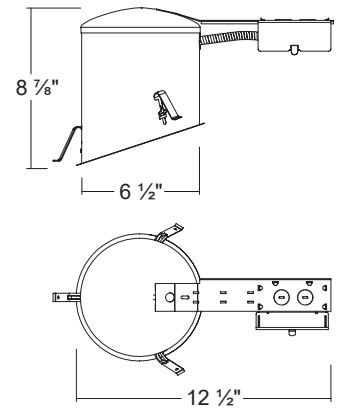


H900ICRA

6" Slope IC Air-Tight Incandescent Remodel Housing (Max. 75W)



Dimensions



ORDERING INFORMATION

Model No.	Description
H900ICRA	6" Slope IC Air-Tight Incandescent Remodel Housing (Max. 75W)

SPECIFICATION

Housing

- Designed for use in ceiling with slopes from 2/12 to 6/12

Junction Box

- Listed for through branch circuit wiring
- Contains one 1-1/8", six 7/8" knockouts and four Romex pryouts with strain relief

Socket

- The socket aiming mechanism allows the lamp to be aimed straight down regardless of ceiling pitch

Remodel Clips

- Three Remodel clips secure housing and accommodates 1/2" and 5/8" ceiling materials.

Thermal Protector

- Self resetting thermal protector deactivates fixture if overheating occurs due to improper lamping or misapplied insulation.

Listings

- cULus Listed for Damp Location
- cULus Listed for Feed Through
- Certified under ASTM-E283 for Air tight construction

COMPATIBLE TRIMS

T900 Smooth



- Incandescent
150W BR / Par30

T903 Stepped Baffle



- Incandescent
75W BR / Par30

T605 Eyeball



- Incandescent
75W BR / Par30

T684 Regressed Eyeball Baffle



- Incandescent
75W BR / Par30